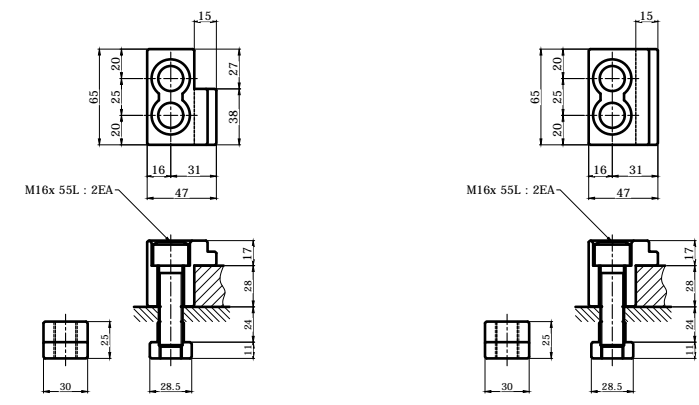
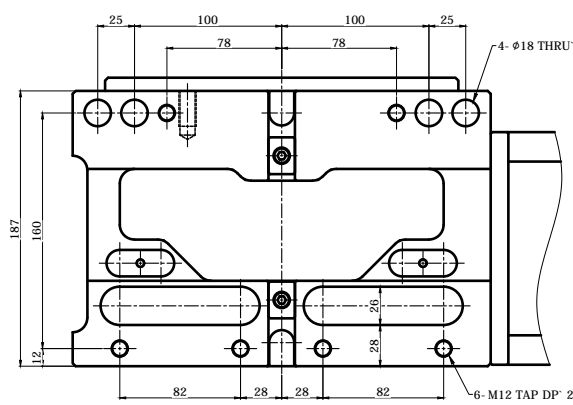
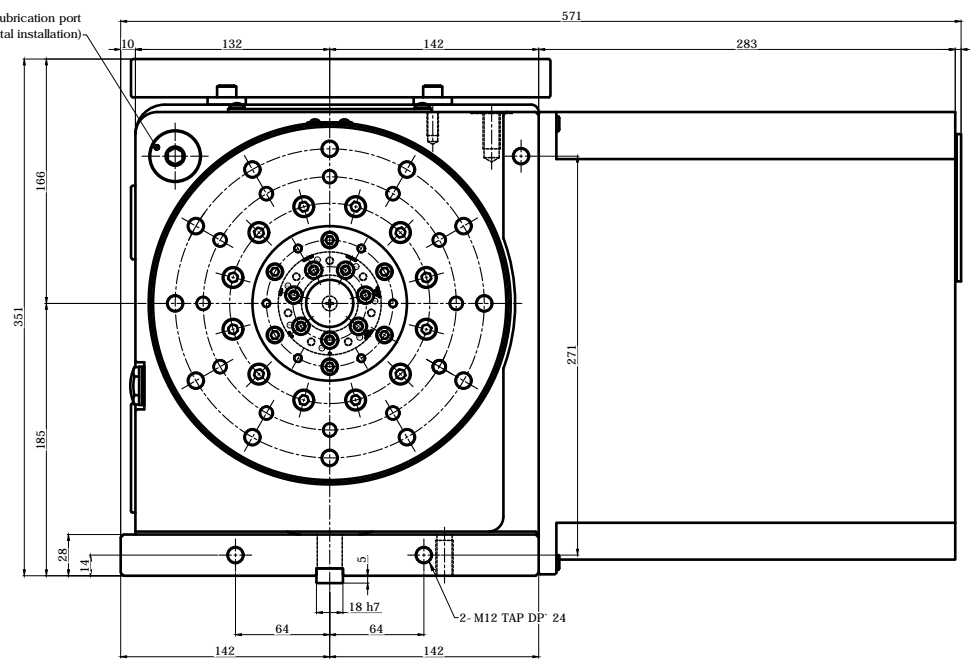
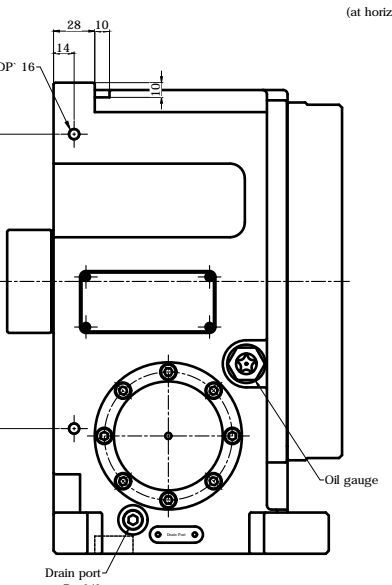
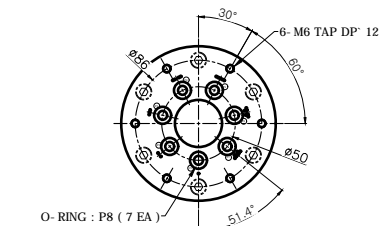
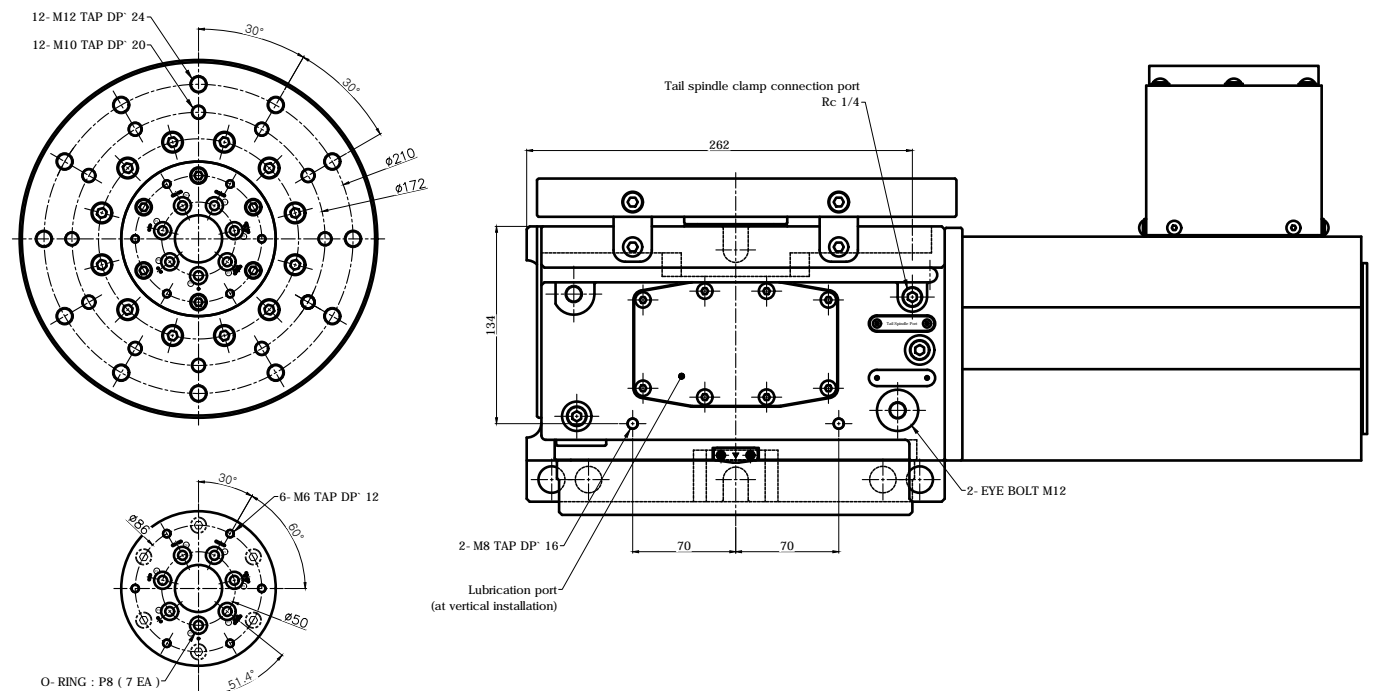


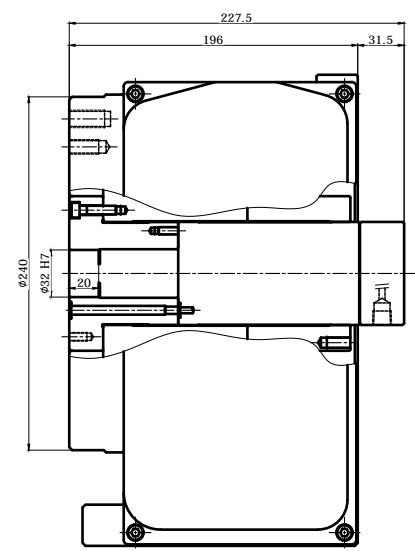
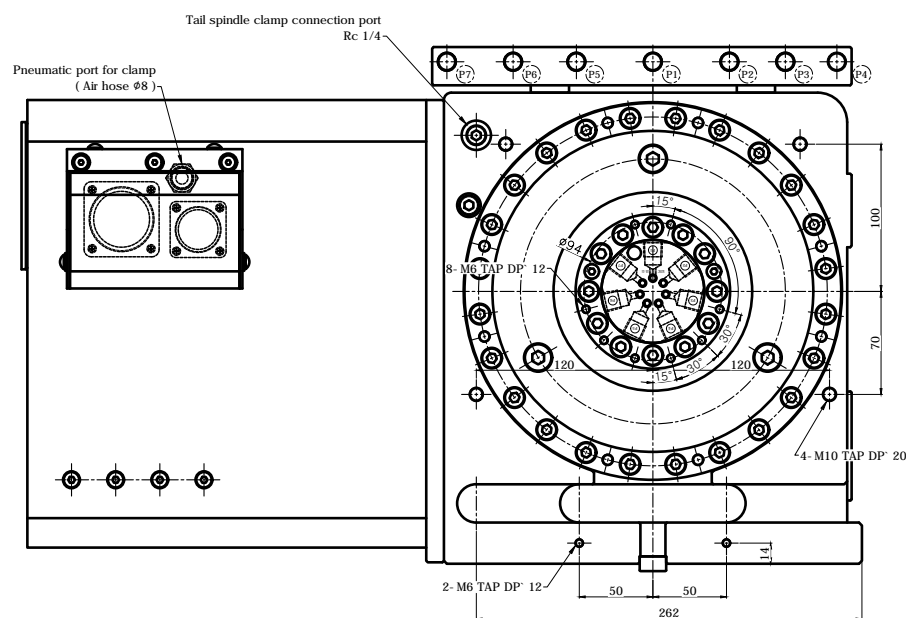
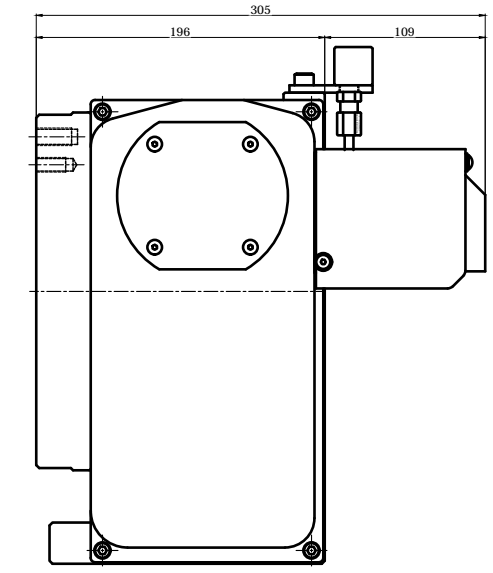
변경 사항			
기호	변경 내용	날짜	수정 승인

Vertical (수직형) Type

< 5- Port Rotary Joint >

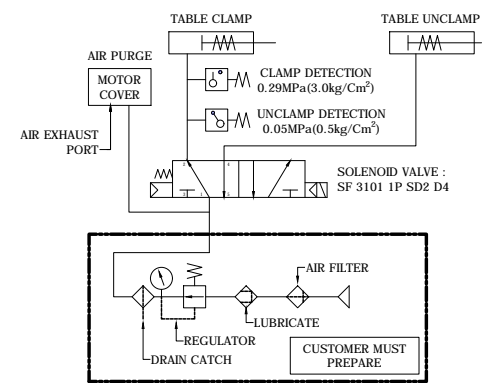


[A Type] ACLAMPING PARTS ACCESSORY 2 PAIR [B Type] ACLAMPING PARTS ACCESSORY 2 PAIR



SPECIFICATION	
테이블 직경 Table Diameter	φ240 mm
센터 높이 Center Height	185 mm
기준경 Reference Diameter	φ32 H7
관통경 Spindle Through Hole Diameter	-
클램프 방식 Clamp Method	Pneumatic 5 ~ 7 kgf/cm ²
관용 모멘트 Allowable Work Inertia	0.5 kg·m ²
클램프 토크 Clamp Torque	-
회전 속도 Max. Spindle Speed	50 min ⁻¹ (MAXIMUM MAX. 2000 min ⁻¹)
기어비 Gear Ratio	1 / 60
무게 Weight	- kg
기어 윤활 Gear Lubrication	ISO VG #150
허용하중 ALLOWABLE MASS OF WORK	125 kg [VER.]

[Rotary Joint Specifications]	
Temperature	MAX. 80°C
Hydraulic	MAX. 200 kgf/cm ²
RPM	MAX. 50 RPM
PORT	7 PORT

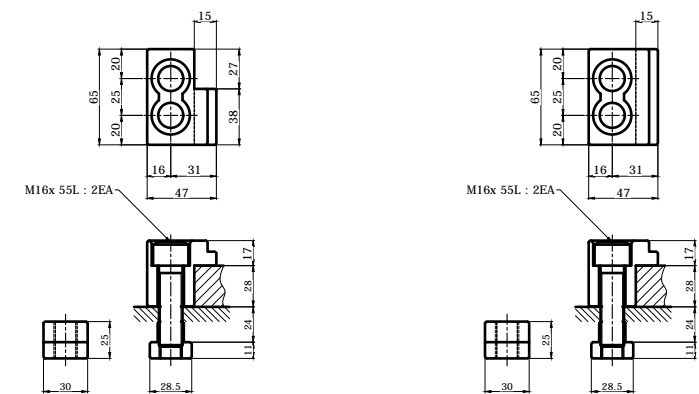
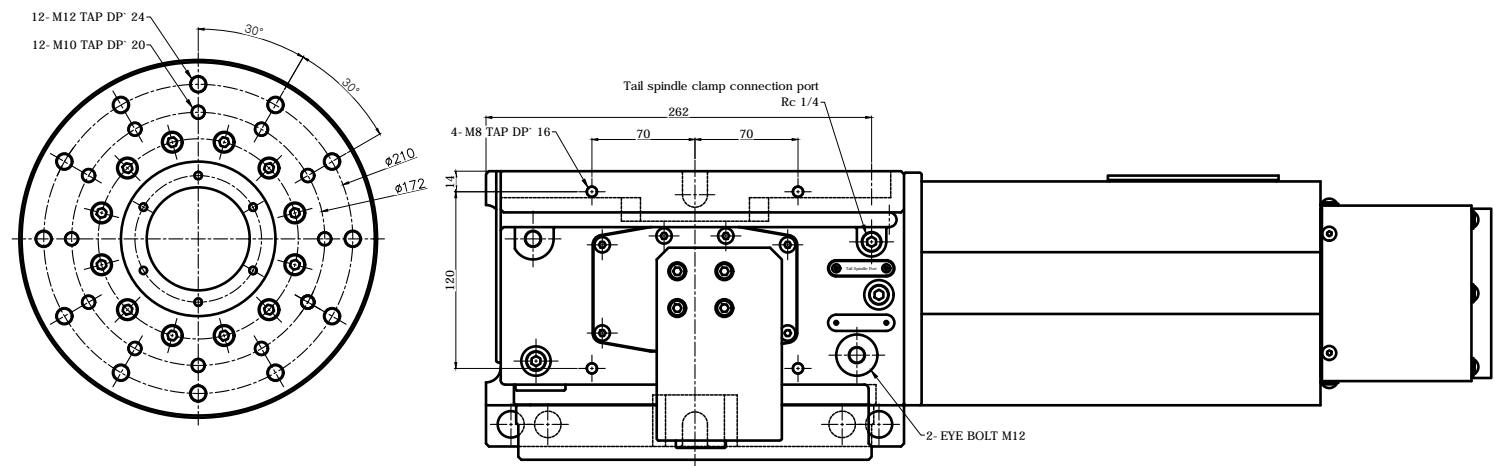


TITLE	RGC, Nc Rotary Table	PART NAME	외형도
DRG. NO.	RF-250FR-Rotary Joint	USER	-
CODE NO.	-	DEPARTMENT	Research & Development
		DATE	2020. 09. 01
SCALE	1 : 1	Approved	Checked

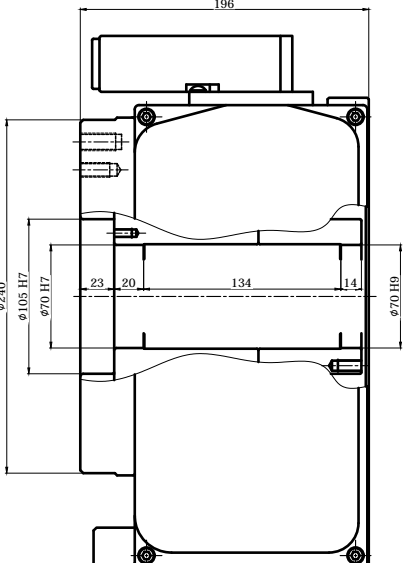
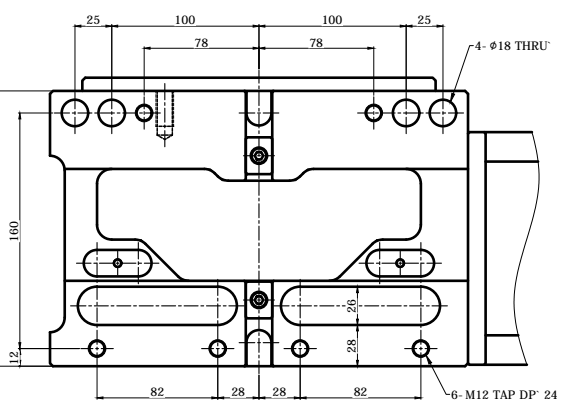
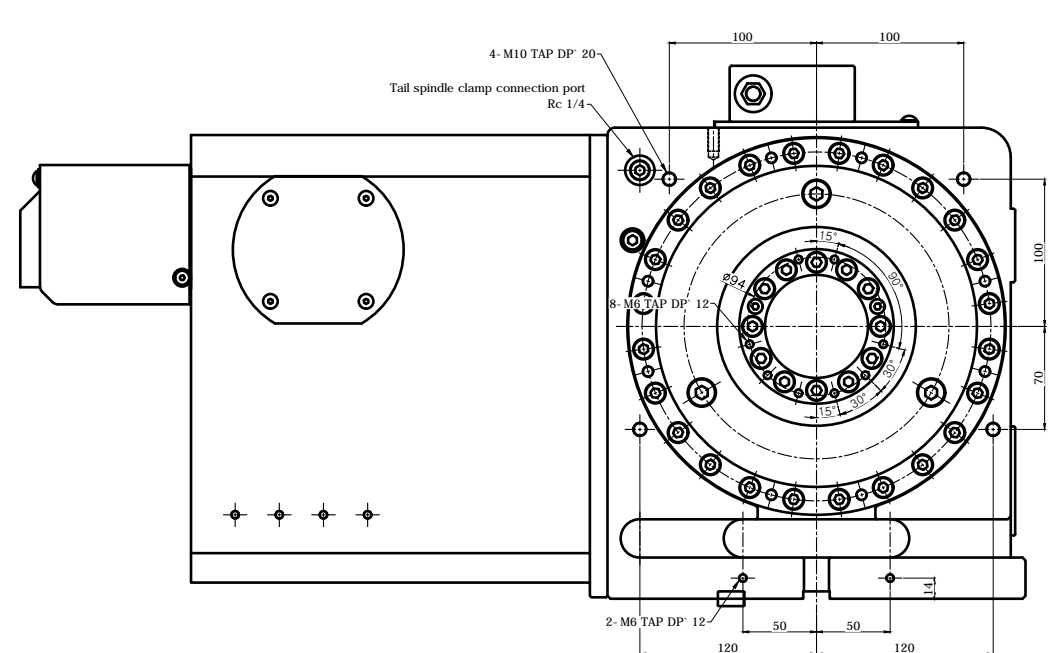
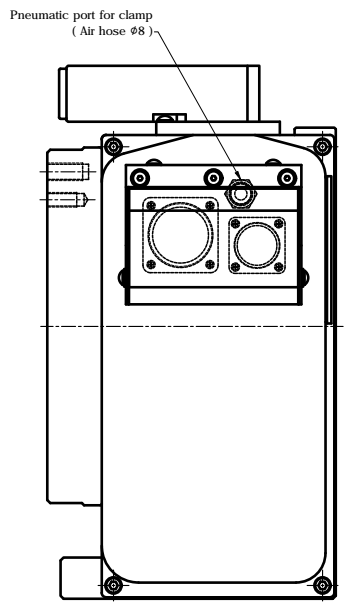
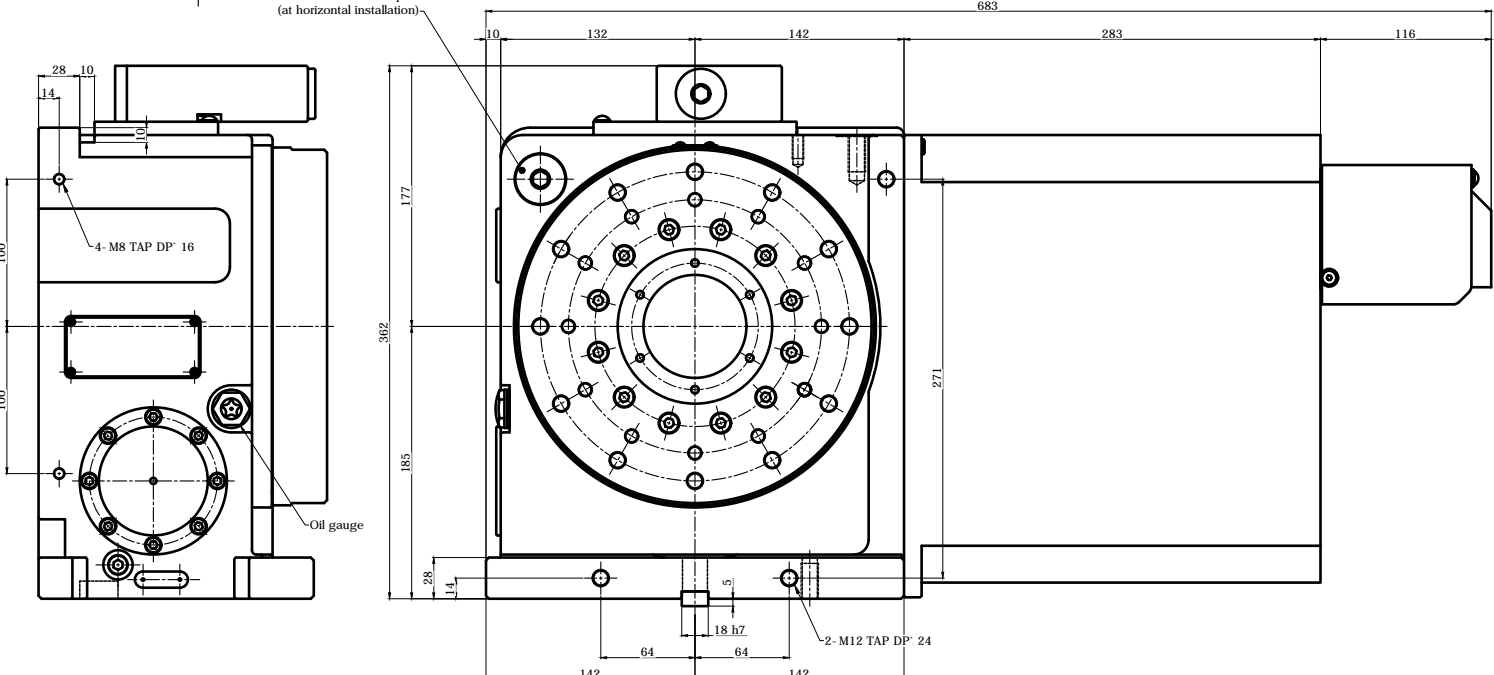
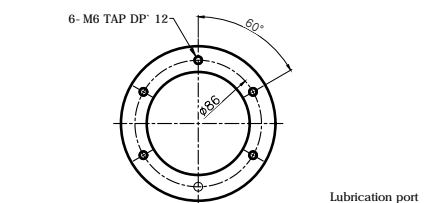


기호	변경 내용	날짜	수정 사람
△			

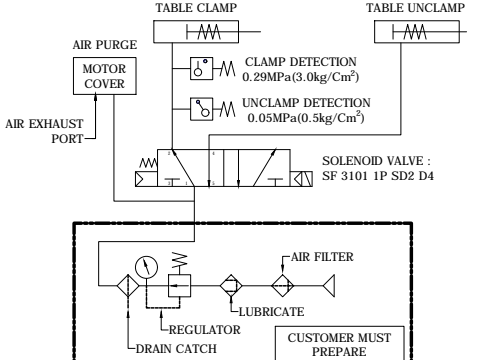
Horizontal (수평형) Type



[A Type] ACLAMPING PARTS ACCESSORY 2 PAIR [B Type] ACLAMPING PARTS ACCESSORY 2 PAIR



SPECIFICATION	
테이블 직경 Table Diameter	φ240 mm
센터 높이 Center Height	185 mm
테이블 내경 Table Inner Diameter	φ105 H7
스핀들 관통 직경 Spindle Through Hole Diameter	-
클램프 방식 Clamp Method	Pneumatic 5 ~ 7 kgf/cm ²
클램프 모멘트 Allowable Work Inertia	0.5 kg·m ²
클램프 토크 Clamp Torque	-
회전 속도 Max. Spindle Speed	50 min ⁻¹ (MAXIMUM MAX. 2000 min ⁻¹)
기어비 Gear Ratio	1 / 60
무게 Weight	- kg
기어 윤활 Gear Lubrication	ISO VG #150
허용하중 ALLOWABLE MASS OF WORK	250 kg [HOR.]



TITLE	RGC, Nc Rotary Table	PART NAME	외형도
DRG. NO.	RF-250F8-Horizontal	USER	-
CODE NO.	-	DEPARTMENT	Research & Development
		DATE	2020.09.01
SCALE	1:1	Approved	Checked
		Designed	

